



# SYMPTOMS OF COVID-19

**Seek medical care immediately if you or someone you know has Emergency Warning Signs of COVID-19:**

- Trouble breathing
- Persistent pain or pressure in the chest
- New confusion
- Difficulty walking or staying awake
- Pale, gray, or blue-colored skin, lips, or nail beds, depending on skin tone

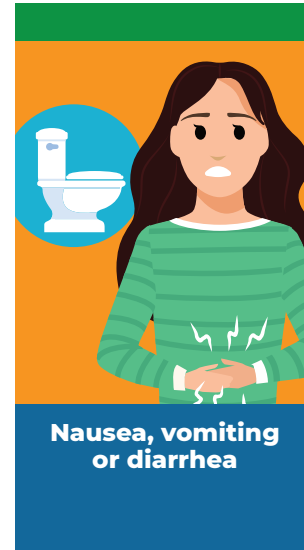
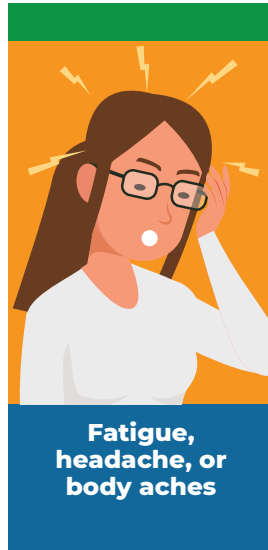
**This is not a list of all possible symptoms. Please call your healthcare provider for any other symptoms that are severe or concerning to you.**

**Visit [LauderhillAHL.com](https://www.lauderhillah.com) for more information.**

SCAN ME



## Know the symptoms of COVID-19, which can include the following:



**If you are experiencing any of these symptoms, get tested for COVID-19.**

**Symptoms can range from mild to severe and appear 2–14 days after you are exposed to the virus that causes COVID-19.**